

A boiler is one of those items of gear you wish not ever to factor in except a thing is going improper. Then, all of the sudden, you might be all in favour of rigidity, flashing lighting, distinctive noises, and why the heating feels colder in a single room than one other. The trick is to construct a behavior early, fairly after a brand new set up or a primary provider following a change of method factors.

If you are in Essex, one could see a vast combine of residences, from older terraces with older pipework to more moderen, more suitable insulated houses. That subjects seeing that boiler performance is not ever very nearly the boiler unit itself. It may be about water first-rate, machine cleanliness, controls, ventilation, and the way the total setup behaves over the years. A right after-set up inspection and a sensible preservation routine can hinder the small difficulties from growing to be high priced ones.

This e book makes a speciality of what to compare after the boiler is set up or serviced, what "outstanding functionality" may want to believe like, and the way to plan long run maintenance so that you get good warmness, [Boiler Service Essex](#) regular efficiency, and fewer emergency name outs. Along the means, I will mention the sensible edge cases I even have encounter, like a bit of noisy pipework that may be innocent, or strain drops that are usually not.

The day after set up is while matters ought to consider boring

The word I pretty much use with users is "boring is ideal." After a boiler installation, the approach should settle in and behave more commonly, without drama. That does now not imply possible not at all pay attention some thing. You may possibly pay attention the pump run, a transient click from inside valves, or a mushy noise whilst warm water starts offevolved to pass. What you need to keep are habitual faults, persistent air noises, repeated force loss, or a burner that appears to cycle too ordinarily.

Even if the install itself turned into done cleanly, there are just a few variables that can influence how the boiler performs within the first days and weeks. In lots of buildings, the valuable heating system carries a few air that wishes to maneuver out, and the installer may have completed flushing and commissioning steps. But techniques differ. Pipe runs vary. Radiators differ in how they entice air. And controls differ in how they reply to how the home heats.

A stable after-install determine is about confirming the boiler is running inside envisioned behaviour, and that the relax of the manner is doing its activity.

What to determine after the installer has gone

Here is a primary, functional guidelines you'll use at house. It seriously is not meant to update a Gas Safe inspection, but it facilitates you see troubles early and offers you clear tips whenever you want to call anyone lower back.

1. **Pressure stability on the gauge:** confirm the force matches the installer's really helpful latitude while the system is cold, and spot if it remains there after more than one typical heating cycles.
2. **Hot water delivery:** run a faucet for a minute and take a look at the temperature settles easily rather than fluctuating wildly.
3. **Radiator warmth balance:** bleed any radiator that feels dramatically cooler than the others, but only if this is dependable to accomplish that and basically after you've been instructed the system is in a position for bleeding.

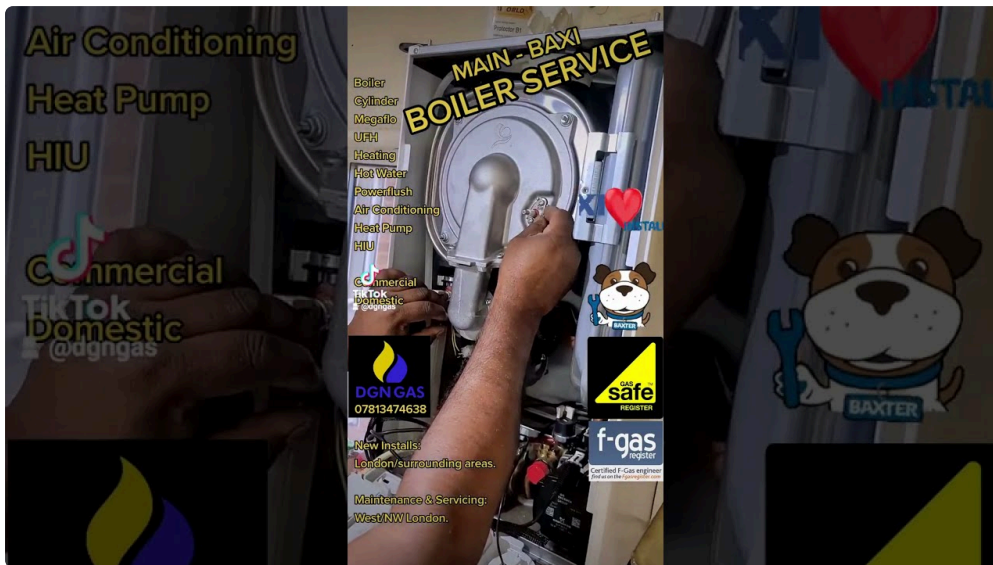
4. **Flashing or fault indications:** note any chronic lighting fixtures or fault codes and whether or not the boiler locks out or retains attempting.

If you see whatever thing unfamiliar, do now not preserve resetting the boiler oftentimes. Frequent resets can mask the truly limitation and make troubleshooting harder later.

After-installation exams: what the engineer is basically seeking for

When a legit includes out commissioning and checks, they are successfully proving that the boiler is properly matched in your equipment and that security instruments work. For a targeted visitor, the maximum invaluable frame of mind is to appreciate what "sturdy" looks as if, so you can become aware of while whatever thing drifts.

Here are the themes that in most cases depend maximum after set up.



Combustion and controls, no longer simply heat output

A boiler that produces hot water is just not necessarily a boiler that may be combusting successfully or adequately. The engineer primarily confirms combustion parameters and verifies that the controls reply efficaciously. You would possibly not be in a position to see the ones combustion settings at residence, yet that you could monitor how the boiler behaves while it activates and stale.

For instance, a boiler that brief-cycles most commonly looks like short bursts of heat followed via longer pauses. In some circumstances it truly is wide-spread if it can be responding to a thermostat that may be very touchy, however in different circumstances it points to a movement or temperature-sensing hassle. The change is on the whole in pattern. If it's far occurring for days after set up, it is price asking approximately.

System move and air management

Air within the components can rationale gurgling, fluctuating radiator temperatures, and typically asymmetric heating. Sometimes the boiler sounds a chunk alternative for some time considering air continues to be running its method out. But if air retains returning, there may very well be an underlying leak, a force issue, or an air separator crisis if one is hooked up.

I have visible instances wherein a owner of a house bled radiators twice in per week, then stopped when you consider that the approach "felt nice." It used to be wonderful until eventually it wasn't, when you consider

that the repeated air presence later became out to be related to a slow water loss in different places. The key lesson is unassuming: if the manner helps to keep reintroducing air, deal with it as a clue, now not as a routine mission.

Condensate and drainage

A condensing boiler is predicated on condensate drainage. If the condensate line is blocked or poorly routed, complications can tutor up in damp prerequisites or colder climate. People most commonly notice this as a fault code or a boiler shutdown in preference to as a gradual efficiency decline.

If your boiler ever experiences a condensate-linked fault, it seriously is not a “wait and see” concern. A blocked condensate drain can end in repeated stoppages, and repeated stoppages are tough on method and controls.

“Normal” behaviours one can be expecting inside the first month

One of the most important sources of rigidity for home owners after a boiler alternate is assuming that any abnormal sound potential failure. Boilers do make noise, and structures do settle.

A few popular behaviours rely on the kind of boiler and the heating setup, but fashionable examples embody:

- The pump strolling in brief at occasions you did no longer request warmness, relatively if scorching water and heating schedules overlap or if the controls perform anti-cycle functions.
- A gentle click on when the boiler ameliorations mode.
- Slight modifications in radiator temperature as thermostats, valves, and the boiler’s possess keep an eye on common sense study your agenda.

If you hear a thing alarming, along with loud banging (water hammer), constant whistling from a pressurized area, or the odor of burning, discontinue simply by the gadget and get assistance correct away. Those usually are not the “settling in” noises.

Common early complications, and what they mainly mean

After installing, a few things coach up at once. You will choose to reply right away, but also with the accurate level of urgency.

Pressure losing over a brief period

A force drop should be would be could very well be brought on by a small leak, air inside the components, or regularly a complication with how rigidity is managed throughout initial filling. If the power drops slowly over days and needs topping up sometimes, that may be a signal to enquire. Repeated topping up with out searching the cause can lead to oxygen and corrosion matters over the years, highly in older structures.

What topics is how swift it drops, and regardless of whether it returns after topping up and bleeding radiators. If the procedure maintains wanting interest, deal with it as a diagnostic subject, no longer a “save it crowned up” routine.

Radiators that not ever moderately heat up evenly

Uneven heating shall be as standard as trapped air in one radiator or as involved as movement matters, balancing trouble, or valve constraints. After deploy, it's miles well-known to look one radiator slower than others when the manner balances and any remaining air actions.

If a radiator remains chilly even after bleeding (where applicable and dependable), or if the temperature big difference is intense, do no longer with no trouble ignore it. Cold radiators many times imply much less stream than estimated via that phase of the formula, and which will have effects on standard efficiency.

Hot water that's high quality for your time, then not

With combi boilers, warm water performance is dependent seriously on pass rates and sensor readings. With process boilers, it comes to the cylinder, thermostat, and wiring. If scorching water temperature varies, factor in patterns. For illustration, if it fluctuates basically when the heating comes on, which can point to how priorities and controls are set.

If sizzling water is going cold without delay whilst an individual activates the heating, that could be a clue. If it will get cooler steadily throughout the related bathe consultation, that indicates a extraordinary sort of behaviour.

The factor isn't very to self-diagnose from symptoms on my own, however to report the trend as it speeds up troubleshooting.

Future upkeep: what "well carrier" covers

A boiler provider is not just a quickly assess and a stamp. A exact service is ready safeguard, combustion performance, and verifying the boiler and controls are nonetheless working efficiently. The provider also supports catch small considerations beforehand they grow to be failures, fairly these associated to wear and deposits.

I tend to give some thought to repairs as three layers:

1. **Safety checks:** making certain the boiler is running as it have to, with flues and combustion safely assessed.
2. **Performance checks:** verifying the burner and key formula work successfully.
3. **System checks:** hunting past the boiler to how the heating approach behaves average.

If your engineer spends time looking at the boiler in operation, checking combustion readings wherein principal, and verifying the security facets, that is mostly a effective sign you are becoming a truthfully sensible carrier.

The repairs agenda that sincerely suits actual homes

You do now not desire a tough plan, yet you do want a thing you would stick to. Most other people give some thought to carrier as soon as a 12 months, then omit all the pieces else. A greater simple mindset is to do "faded exams" between functions and guide the entire service on time table.

Here is a truthful plan it is easy to practice depending on how your approach behaves.

1. **Once a yr (or as cautioned):** e book a full Boiler Service Essex seek advice from for combustion and safety exams, plus verification of key accessories.

2. **Every few weeks in winter:** pay attention and observe, notice any new noises, examine radiator overall performance in the identical rooms and evaluate.
3. **After any fault:** if the boiler indicates an error, set up a perfect restoration rather than repeating resets.
4. **Seasonal habits:** run the heating and warm water assessments while you turn seasons, so that you catch management disorders early.
5. **Watch rigidity trends:** retailer an eye fixed on pressure whilst cold, and treat repeated rigidity loss as a diagnostic element.

A immense element of it really is documentation. If you ever want a name out, it is a great deal simpler to provide an explanation for "pressure dropped from X to Y over five days" than to claim "it seems to be to lose power often." Even a quickly note for your mobile enables.

What changes in effectivity, and why it topics for maintenance

People more commonly discuss approximately performance in terms of vigor fees, however there's also a long-time period machine attitude. When boilers perform with deposits or improper combustion parameters, that you could see symptoms like:

- obdurate ignition,
- extended biking,
- a smell of combustion, or
- chronic faults.

Deposits building up through the years caused by water fine and machine chemistry. How immediate they building up depends on your private home, how the components was flushed right through install, even if the precise inhibitors are used where proper, and whether the formula has been crowned up through the years.

I do no longer desire to overstate it. Not each and every deposit hindrance shows up dramatically. Often it suggests up as a sluggish lack of soft operation. That is exactly why traditional servicing concerns.

Essex-particular considerations you ought to save in mind

Every edge has its quirks, and Essex is not any exception. You will find:

- a whole lot of older housing stock with technique upgrades executed in ranges,
- a mixture of mains water situations across areas,
- and masses of residences wherein ventilation and outside pipe routing were altered over time.

Those aspects have an effect on condensate routing, boiler placement, and how directly any procedure cleanliness trouble educate up. If you have an older process related to a more recent boiler, renovation turns into even more tremendous because the boiler is the most modern component, now not necessarily the such a lot stable section of the approach.

Also, in chillier snaps, condensate things or air-lock disorders typically turn into glaring. If your boiler behaves differently in January as compared to October, you should not imagining it. The process is reacting to temperature, drive adjustments, and condensation formation. That is the place seasonal assessments and respectable provider histories repay.

A quick lived revel in: whilst "it's very likely pleasant" value time

I once had a shopper who informed me the boiler "still heats the residence, so we left it." They had observed the radiator close the stop of the loop stayed quite cooler, then several weeks later the strain needed a small prime up. The boiler in no way absolutely failed, which made the obstacle easy to disregard.

When the engineer in spite of everything investigated, the actual result in became out to be a slow leak that used to be letting out water and introducing air. It become now not catastrophic all of a sudden, but it supposed repeated stress transformations and approach contamination hazards. The restoration was once not highly challenging once it used to be came upon, but it become a not easy predicament because the difficulty had been allowed to continue for longer than it needs to have.

The lesson I took from that call is realistic: while you observe a style, now not only a one-off journey, treat it critically. Boilers tolerate many stuff, however they do now not "heal" a leaking approach.

Questions to ask at provider time (and why they assist)

Most householders choose reassurance, and a great engineer will give it without making you really feel foolish. If you favor to get the most from your Boiler Service Essex appointment, evaluate asking questions that connect to what you possibly can in general note at domicile.

You can ask approximately:

- regardless of whether the boiler combustion readings look steady,
- what they came across at some stage in inspection,
- if there are any early symptoms that a thing is nearing the quit of its existence,
- and whether or not your system appears to be like fresh sufficient for the longer term.

A potent service broadly speaking carries clean causes. If the discuss with feels rushed or vague, you could prefer to review who you book in long run.

Keeping the boiler suit among services

Maintenance seriously isn't handiest about the once a year appointment. A few conduct can decrease strain in your method.

First, be careful with repeated resets. If a boiler locks out, there could be a explanation why. If it can be locking out over and over again, reset cycles turn troubleshooting into guesswork.

Second, prevent turning thermostats up and down wildly on a day after day groundwork. Controls are designed to manipulate heating, but intense differences can make the device short-cycle or shift behaviour in ways that conceal the underlying quandary.

Third, in case you have radiators with handbook valves, don't power them open or closed. Old valves can trap or leak slowly. If one thing is stiff, ask earlier utilising drive.

When you should call a authentic ahead of later

Some complications must always no longer watch for the next carrier date. If you notice any of right here, I may treat it as pressing enough to get advice briskly:

- the boiler loses rigidity oftentimes among days you are going to be expecting it to be good,

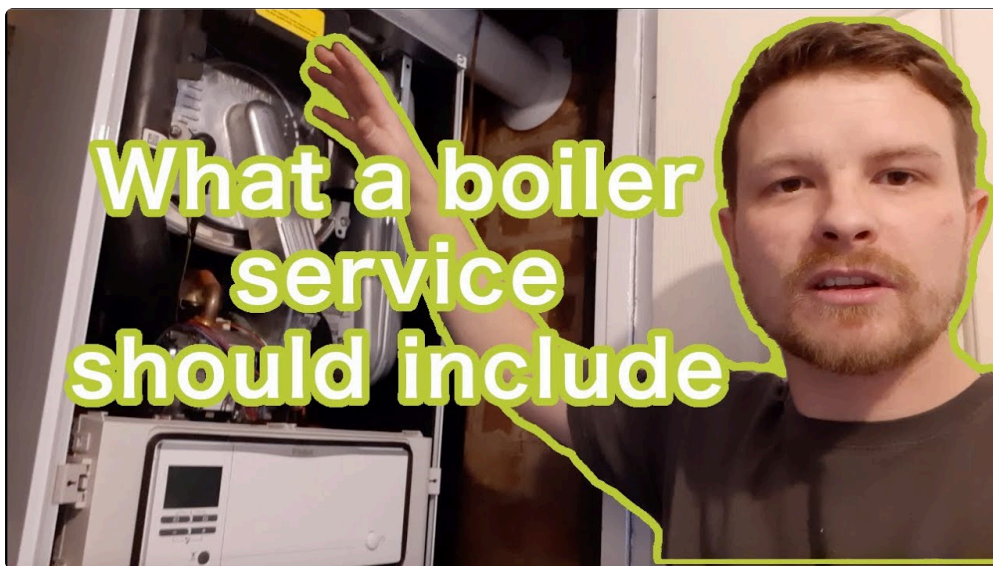
- fault codes avoid acting, especially the ones associated to combustion or ignition,
- warm water performance transformations by surprise and remains inconsistent,
- the condensate drain looks backing up or the boiler normally shuts down for condensate causes,
- you hear loud banging or continual odd noises that don't settle.

There is a big difference between "it seriously is not most appropriate but" and "one thing has moved out of reliable original." If it feels like the 2d one, get lend a hand.

Choosing a company for ongoing Boiler Service Essex support

Service high quality is not best about no matter if the boiler runs after the seek advice from. It is about regardless of whether they money properly, log what they located, and communicate what they put forward. A solid lengthy-time period courting things in view that your installer becomes commonplace along with your manner's quirks, radiator behaviour, and the method your boiler modulates.

When you book, seek for signs like:



- clean appointment instances and polite motives,
- engineers who take a moment to notice operation in preference to dashing,
- and a willingness to speak via what you needs to do if a fault appears to be like lower back.

A a bit of more dear seek advice from shall be value it if it prevents repeated name outs. In heating, just a little prevention recurrently charges less than chasing signs.

The proper goal: consistent heat with fewer interruptions

After-installation exams set the basis. Future renovation protects that basis. The handiest tactics are the ones that experience steady month after month, with solely occasional minor quirks that don't transform emergencies.

If you take one thing from this, make it the behavior of observing styles. Boiler disorders rarely arrive as a unmarried dramatic second. More steadily, they beginning as small shifts, rigidity developments, uneven warm, or a legitimate that becomes usual in a irritating approach. If you trap those early, that you can aas a rule repair the basis cause in the past it affects remedy, performance, or the wellbeing of the boiler.

And whenever you are planning your subsequent appointment, otherwise you need to affirm the after-install state of your formulation, booking a perfect Boiler Service Essex seek advice from with an individual skilled is one of the most perfect selections you would make for strong heating in the months in advance.