

A boiler breakdown has a means of turning your nighttime into a maths worry. How long except it cools down? How long unless the pipes freeze? How lengthy except it is easy to get human being reliable on the cell?

When you determine a quick reaction Boiler Breakdown service, the velocity topics, however so does what you do inside the hours prior to the engineer arrives. I actually have noticeable the same call give up very in another way depending on even if the home owner taken care of it like an emergency and treated some basics first, or no matter if they saved seeking to reset controls, close off safe practices switches, or kept the process jogging when a fault used to be evidently worsening.

Below is a realistic "what to do next" e-book you could possibly stick to at the same time you watch for Boiler Service or Boiler Repair lend a hand, even if you might be handling a Gas Boiler, an LPG setup, a Gas Fire, or maybe something fuelled from a industrial subject like a Burger van gas line.

First, investigate the scenario, no longer just the error code

Most smooth boilers coach an mistakes code, and this is tempting to deal with the monitor like the whole tale. In fact, a code is handiest one clue. Pressure readings, thermostat behaviour, distinctive noises, smell, and whether heating or scorching water is affected will level you in the right route.

If your boiler has stopped operating, ask your self two easy questions:

1) Is it thoroughly lifeless, or is it still attempting to fireplace? 2) Is the heating, scorching water, or either out?

A "no warmness" symptom can suggest circulate or controls trouble. "No scorching water" can mean the diverter valve, a inaccurate plate heat exchanger ingredient, or a wiring issue. "Both long past" is more likely to be ignition, strain, overheating lockout, or a safe practices swap.

Even while you do not know what the fault is, that you may usually inform even if the boiler is safe to depart it by myself. If it really is in a lockout state, the most secure circulation is often to prevent interacting with it and look ahead to the engineer. If it's far in a steady try out cycle, you possibly can desire to change it off and contact your installer or the Boiler Repair staff desirable away, due to the fact that repeated ignition makes an attempt can waste time and, in a few circumstances, irritate the fault.

When speed things most

Fast response will become even greater terrific if any of those are genuine:

- It is particularly bloodless and the components is at risk of freezing.
- You have tenants or susceptible workers in the domestic.
- You should not get entry to trustworthy hot water and also you need to remain heat, surprisingly in a single day.
- There is any signal of a gasoline predicament, like a continual smell of gas.

If there is any suspicion of gasoline escape, do not watch for a later appointment. Ventilate if it truly is reliable to accomplish that, keep away from switches, and persist with your native safety training. Then contact the emergency fuel line or your emergency fortify channel.

What you might do correctly formerly the engineer arrives

You do no longer desire to be technical to aid the next steps cross smoothly. The best get advantages of doing a couple of checks early isn't always "fixing it yourself", it is preventing accidental ruin and giving the engineer the exact counsel.

Start with basics you can actually make certain without commencing panels or bypassing safeguards:

- Confirm even if the boiler has energy.
- Check the heating controls, like the thermostat and programmer or clever controls, so that you don't seem to be calling it a boiler fault whilst it's miles a regulate surroundings hassle.
- Look at the boiler display for the contemporary code and even if it has changed because it stopped.
- Note the method stress if the boiler has a gauge. If drive is extraordinarily low, that will element towards a leak or a top off aspect.
- Smell try out simplest in the obvious way. If you smell gasoline, deal with it as an emergency, now not a "wait and see".

If you might be managing [Gas safety certificate Essex](#) LPG, a few houses and small sites have unique setups and callouts may contain extra isolation and checking steps. Either method, you deserve to now not test advert hoc refilling, bleeding, or "workarounds" unless your installer in the past gave you a selected trustworthy method. A quickly good up might be the appropriate restoration in a few instances, however if there's a hidden leak or caught filling valve, repeated refills can turn a manageable fault into an even bigger plumbing factor.

A fast observe on drive and "just are attempting to come back"

I even have heard it mainly: "I restarted it three times and it labored." Sometimes that's risk free. Sometimes it really is the formulation clearing a lockout after an risky ignition tournament. The situation is that repeated resets without working out the cause can bring about greater lockouts, loss of gasoline safe practices diagnostics, and delays at the same time as the engineer exams what took place.

If the boiler is locked out, a single restart will likely be cost-efficient simply if you are bound the manner is trustworthy and regular with the brand steerage. Beyond that, it is enhanced to pause and wait. A swift response Boiler Breakdown provider remains to be speedy, yet it really is so much sooner while the engineer seriously is not arriving to undo wreck brought on by repeated makes an attempt.

While you wait: create a timeline and assemble details

A properly engineer call is partly about the activity and in part approximately the tale. You could make their first 10 mins far extra efficient just through noting down a few things.

Here is what I advise you write down, even to your smartphone notes app:

- When it started, and what you had been doing while it happened.
- Whether you lost heating first or hot water first.
- The boiler mistakes code, such as any modifications after resets.
- Whether the boiler makes any noises earlier than locking out, like clicking, fan runs, or attempting to ignite.
- Whether radiators experience cold on the peak or backside, or if one region heats even though a further does not.

- If the house has had contemporary modifications, like a persistent reduce, a development leadership time table modification, or plumber work on regional pipework.

This is exceedingly priceless for elaborate installs, like properties with more than one quarter, or corporations in which the Boiler Service plan covers a number of appliances.

If here is a broader plumbing or heating method aspect, now not just the boiler, details about current Plumbing paintings can exhibit whether or not a valve used to be moved, a method used to be drained, or an isolation was once left closed. Those little issues can mimic boiler faults.

Understanding what the engineer would take a look at on arrival

You do not ought to memorise the whole technical task, but understanding what may perhaps show up reduces surprises and helps you make a decision whether or not it must be treated as an pressing Boiler Repair.

Typically, the 1st exams include:

- Gas and electric protection exams suitable to ignition and operation.
- Flue condition tests the place proper.
- Burner and ignition assessments if the boiler fails to hearth.
- Heat exchanger and sensor assessments if the boiler overheats or locks out.
- Water tension, filling loop goal, and signs of leaks.
- Control alerts, wiring, and thermostat inputs.
- If central, circulate assessments like pump operation and pass temperature behaviour.

If the procedure has a historical past of sludge or bad movement, an engineer might also recommend a Power Flush or extra flushing steps. This will never be whatever thing you ought to leap to all of a sudden after a breakdown, however it might be the right call the place radiators are imbalanced, the boiler functionality has been deteriorating, or there is evidence of debris affecting circulation.

For home owners, Power Flush is mostly linked to older strategies or repeated concerns. For landlords and industrial sites, it really is often a part of deliberate upkeep to evade routine blockages that result in routine Boiler Service callouts.

When the hardship is just not the boiler itself

One of the extra frustrating areas of a breakdown is that it can really feel like a "boiler fault" while the underlying situation is someplace else. A quick response engineer will ordinarily separate these preferences quick, however one could assistance by way of information just a few generic "now not the boiler" scenarios.

Radiators staying cold at the same time as warm water works can point to a valve, pump, air trapped within the formulation, or a thermostat or sector manage aspect. Hot water devoid of heating might also occur with sector valves or domestic scorching water priorities, based on the components layout.

On the opposite hand, if the boiler is operating for the two heating and warm water at occasions, but now not perpetually, the crisis is likely to be intermittent ignition, a sensor studying flow, or formulation drive fluctuations on account of a sluggish leak.

In older buildings, you could additionally see exterior disorders like blocked condensate drainage. That more or less challenge can lead to lockouts and repeated failure to ignite for the reason that the process shouldn't

operate as supposed.

If your quandary is attached to a gas appliance beyond the boiler, like a Gas Fire, the investigation may boost. Gas Fire Service consists of assessments which can be related in principle however not similar in aspect. It remains about trustworthy combustion and controls reliability. If your Gas Fire also is not running, allow the engineer be aware of. It would possibly save you separate callouts and make the whole Gas Safety Check procedure smoother.

If it's miles bloodless in the apartment: shelter pipes with no panic

People panic approximately freezing pipes, then they turn out to be taking dangerous steps. You favor to defend weak pipe runs without introducing negative aspects.

A protected technique is to continue the heating gadget's included constituents in thoughts. If your boiler is out, you'll now not have heating, so center of attention on retaining rooms with exposed pipework rather heat. Open cupboard doors the place pipework runs. If you could have a loft or underfloor subject with weak strains, do what is affordable to decrease the menace of freezing.

Do not open the boiler casing to look for leaks, and do no longer try to pass protection cutoffs. If pipes are at hazard and the procedure cannot flow, this is exactly the time to prioritise a fast response call and be in a position with get admission to suggestions so the engineer can get in fast.

Gas defense certificates and what it capacity after repair

Many breakdown callouts develop into a restore, and a lot of repairs require a Gas safe practices certificates update based on who's chargeable for compliance to your difficulty. If you are a landlord or handling a assets portfolio, you're going to already be aware of the distinction among a service checklist, a defense assess, and what you want to supply at inspection time.

If you're in a home putting, it is easy to nonetheless choose clean documentation in your archives, mainly after any work affecting combustion, flue parts, fuel controls, or safety instruments.

When the engineer completes Boiler Repair or a Gas Safety Check, ask what the outcome is in undeniable terms:

- what failed,
- what changed into changed or adjusted,
- no matter if the boiler is now riskless and operating inside of the best option prerequisites,
- and what paperwork you are going to be given.

That question is not very nerve-racking. It saves misunderstandings later, primarily you probably have one other belongings supervisor, a tenant flow-in, or ongoing installing making plans.

Boiler deploy and why a breakdown can swap your plans

Sometimes a breakdown is the instant you select the method has had sufficient. I actually have noticed boilers changed after repeated points wherein the check of steady Boiler Repair could basically buy a quick reprieve, and I have additionally considered perfectly serviceable systems to come back on target after the suitable restoration plus a clear-out.

If you might be in many instances calling for Boiler Service, it's miles value asking the engineer even if the fault trend suggests aging constituents, scale buildup, or stream complications that will respond greater to a complete process refresh.

A breakdown can even display that your recent boiler sizing, controls, or installing procedure seriously isn't best suited for the belongings. That can depend greater in homes with heavy sizzling water call for, immense radiator rather a lot, or older pipework.



If you are interested in Boiler Installation, ask approximately:

- the condition of current pipework and flue,
- whether or not any Power Flush or plumbing changes are considered necessary for long run efficiency,
- how the installer plans to integrate the recent unit together with your current equipment controls.

This is additionally the time to speak about any related companies you may desire, which includes Plumbing paintings, radiator alterations, or adjustments to thermostats and zoning.

If you furthermore mght have other gas appliances: shop the scope clear

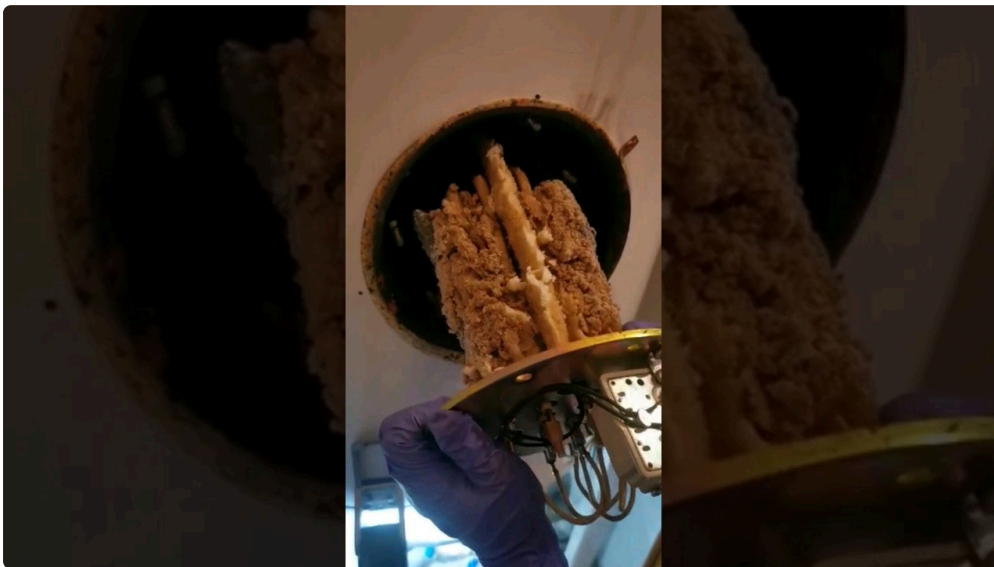
Homes do now not necessarily have basically one concern. It is user-friendly for persons to name about a Boiler Breakdown after which comprehend the Gas Fire is performing up too. Or they may have a Gas Cooker Installation or an latest fuel cooker equipment it's temperamental.

If you're going through assorted appliances, tell your carrier early. A exceptional group can coordinate seek advice from timing so that you sidestep assorted callouts and reduce the probability of lacking a defense-comparable hindrance.

If your own home or business contains LPG, the similar applies. LPG setups will also be protected and respectable, however they will behave another way based on the regulator configuration and delivery preparations. That is every other explanation why now not to bet. Your engineer will treat the gasoline deliver as component of the diagnostic method.



For advertisement settings, consider sparsely approximately the entire photo. A Burger van gasoline setting up is a unique setting than a home: vibration, weather exposure, and instant changeovers can create wear, and food carrier schedules could make downtime highly-priced. If you've got you have got a gas fault affecting cooking and the heating machine can be interested, you desire the quickest riskless selection. Fast response issues, but nontoxic technique concerns greater.



What approximately Aircon and Air Conditioning in the blend?

It is simple to disregard it except it's far too overdue, however some residences use the related basic contractors or preservation schedules for heating and Aircon. If you could have Air Conditioning package similarly to the heating procedure, a breakdown day is a great second to ensure regardless of whether the failure is remoted to the boiler or portion of a much broader electric obstacle.

If there was a vigor cut, a tripped breaker, or a momentary outage, it may have an impact on Aircon instruments, wise controls, and boiler electronics alike. The consequence can appear to be "boiler failure" even when the foundation purpose is vigour associated.

If your Air Conditioning became also affected, inform the engineer. It would lend a hand them rule out distinctive factors at once and hinder repeating checks already performed throughout yet one more inspection.

The trade-offs: speed, can charge, and doing it properly

Fast reaction services and products are there for a rationale. The question isn't whether you deserve to transfer quickly, yet how you could decide upon urgency devoid of slicing corners.

Here is what I take note a fair balance:

When the boiler is harmful, the handiest change-off is among speed and safeguard, and safety consistently wins.

When the boiler is secure but not operating, you wish speed and clarity. That skill:

- get an appointment promptly,
- allow the engineer do suited diagnostics,
- and restrict pushing for shortcuts like elements swaps with no checking out.

Cost surprises mostly manifest whilst persons do no longer realize what the possibly repair class is. Some jobs are user-friendly, like replacing a defective part this is failing to cause ignition or regulating temperatures safely. Others also can require deeper paintings, like addressing a circulation complication or managing procedure contamination in which Power Flush will become relevant.

If you're offered concepts, ask what alterations once you favor the cut down-fee route first. For example, if a sensor is replaced however the trigger is particles, a moment failure can occur before envisioned. That is absolutely not always avoidable, yet it's major mentioned brazenly so you can opt together with your eyes open.

A realistic listing for the mobilephone call

You will possibly dialogue to anybody at the provider earlier than an engineer is dispatched. You can pace the entirety up by means of having the good info at hand.

Call-organized checklist

- Your cope with, postcode, and get admission to notes (parking, key place, alarm code if applicable).
- Boiler company and form (almost always at the the front panel or in the management enviornment).
- The error code shown and whether heating, sizzling water, or both are affected.
- Current process drive examining if you can see it properly at the reveal or gauge.
- Whether you scent gas, and if the other appliances just like the Gas Fire are affected.

That final factor concerns extra than of us feel. A spouse and children with dissimilar gas home equipment repeatedly has underlying grant or air flow prerequisites which can be central to Gas Safety Check results.

Edge situations: peculiar setups that want cautious handling

Not each and every breakdown follows the standard sample. A few occasions generally require excess warning and more effective communication.

If you are on an LPG grant, verify the engineer knows that early. Mention it even whenever you suppose it's far apparent. It affects how they manner source tests and exact substances.

If you've a advertisement or semi business setup, like a small catering unit that involves a Burger van gas connection, downtime has knock-on results. The instant reaction group also can desire to coordinate around

running hours and equipment get admission to. Tell them no matter if the gas cooker or other appliances will have to continue to be in operation even though the boiler restoration is scheduled, given that that ameliorations isolation planning.

If your property is component of a multi-unit association or shared plant room, the difficulty could be shared too. In that case, calling the perfect man or women quickly can ward off repeated provider visits.

If the boiler is hooked up to a much broader heating system with ordinary pipe routes, intermittent heating disorders can manifest. Radiators could paintings in one aspect and fail in a different, and people patterns can screen the place move is suffering.

If there has been contemporary Plumbing work, or a radiator was once delivered or got rid of, point out it. A valve left closed or a drive substitute delivered all through the work can create warning signs that appear to be boiler failure.

After the fix: what "solid" appears like

Once the engineer has done the Boiler Repair and any priceless checks, take a second to confirm you bought what you paid for: secure operation, strong jogging, and clean reasons.

A boiler it truly is mounted accurate may want to:

- warmness predictably whilst controls demand it,
- produce hot water devoid of weird cycling,
- quit showing the previous mistakes code,
- and no longer make new suspicious sounds.

If the engineer pronounced a long term plan, like monitoring formulation pressure, arranging a future Power Flush, or budgeting for Boiler Installation, deal with it as tips headquartered on what they determined, no longer revenue pressure.

Also prevent your paperwork. If the restoration fascinated Gas Safety Check constituents, ask for the certificates or list as suitable for your scenario. For landlords, that forms is imperative. For house owners, that is nonetheless efficient because it data what used to be checked and what was once adjusted.

When to call back, even after a quick visit

Sometimes a breakdown resolves right now, yet a obstacle reappears. If you see the comparable mistakes code returning inside days, or if stress keeps shedding, treat that as a signal the underlying purpose seriously isn't utterly addressed. Do now not wait weeks hoping it's going to settle.

Similarly, should you be aware repeated lockouts, inconsistent heating, or any gasoline protection problems, name lower back. A respectable Boiler Service provider will anticipate you to contact them if the difficulty returns.

If you might be juggling distinctive home equipment, prevent the scope instantly. If the Boiler Repair is completed however the Gas Fire still behaves poorly, these are separate complications however they each fall below gasoline safety and provider principles. Calling one carrier group for the whole lot is typically the so much handy, however it may want to no longer blur the diagnostic process.

One more issue: make next time easier

No one wants to event a breakdown lower back, but you are able to scale down tension and store time for those who do a little education.

Keep your boiler manual or no less than your boiler sort facts someplace you can still uncover briefly. If you use good controls, word which logo and no matter if the machine is based on Wi Fi or a separate controller. If you're on LPG, ascertain you realize who gives you it and the way the machine is organize.

When you decide upon a fast reaction Boiler Breakdown service, ask what emergency hide looks as if. Some companies are faster than others, however speed may be approximately how in actual fact your request is taken care of and how correctly dispatch works.

And in case your boiler sits alongside a wider time table of installations, like Gas Cooker Installation, Gas Fire Installation, or seasonal checks, ask about bundling. Bundling does not suggest reducing corners. It capability you reduce missed opportunities to detect small things earlier they grow to be breakdowns.

Because the authentic intention is simply not simply getting warm water back tonight. It is having a components that stays riskless due to wintry weather, because of busy days, and with the aid of the inevitable curveballs of authentic lifestyles.

If you desire, tell me what's going on (boiler brand, errors code, regardless of whether it's far heating, sizzling water, or equally, and regardless of whether you're on LPG). I can suggest what to compare adequately perfect now and what main points to present the engineer so the fix is as quickly and actual as seemingly.