

When other people speak approximately mobilephone catering, they most of the time concentration on burgers, timing, and maintaining the menu tight. The unglamorous stuff concerns simply as plenty, fairly wherein fuel is concerned. A strong gasoline cooker installing is what retains your carrier consistent simply by a busy lunch rush, it reduces name-outs, and it maintains you compliant while buying and selling on a hectic pitch.

Whether you're strolling a small burger van with a couple of cookers or a larger trailer with distinctive appliances, LPG systems and nontoxic pipework structure are the backbone of the total operation. I even have obvious what takes place when a van is "virtually perfect" after an early install, then whatever thing drifts over time. The restoration is not ever as short as you desire, seeing that you prove chasing the identical trouble across a couple of areas. Getting the fuel cooker installing done good from day one pays to come back right now.

LPG and mobilephone catering: why the set up has to be different

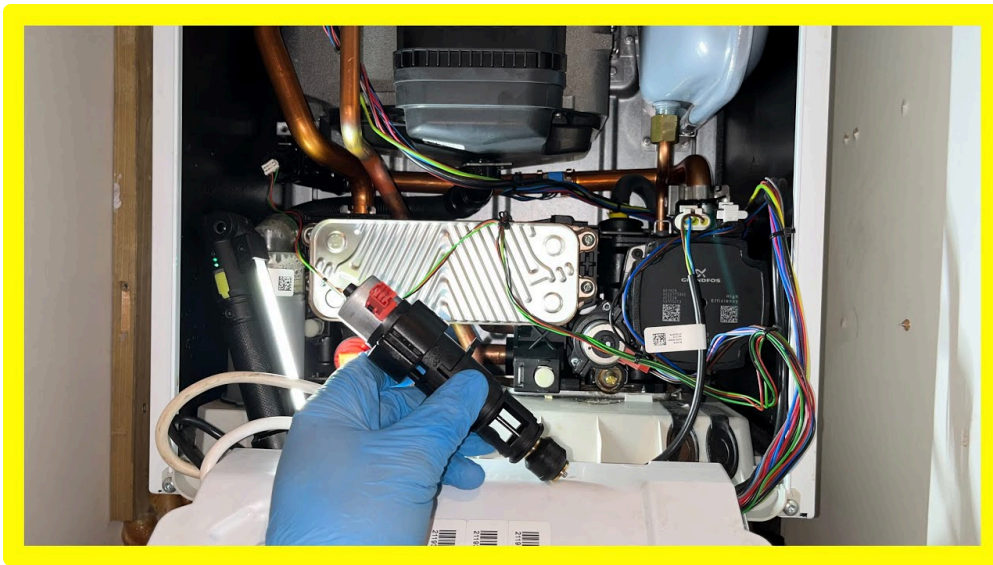
Most commercial gasoline setups are designed for mounted premises with sturdy pipe routes, consistent ventilation, and simple get entry to. A cellular catering unit is the other. You have vibration from using, temperature swings, in some cases hard handling when apparatus gets moved for cleansing, and a regular conflict with area.

For burger van fuel above all, the most important distinction is how compact the design will become. You could have cookers, a scorching water system, most likely a small boiler for wash-up, and once in a while further heating for comfort. Even for those who best set up a unmarried fuel cooker, the encompassing programs have an impact on the way you route pipework and where you suit isolation valves.

LPG adds one other layer. You will not be managing the similar behaviour you could see with normal fuel, and also you want the accurate regulator, the best option pipe sizing, and riskless connections. Poorly planned LPG installations can still "work" for it slow, then commence inflicting intermittent faults, terrible flame stability, or tense burner reduce-offs.

The strategy planning stage: in which exceptional paintings starts

A proper gas cooker set up starts off beforehand the primary spanner turns. I normally investigate how the unit should be used, not simply the way it appears. Where will the cook stand? What doorways get opened for the time of carrier? How are you cleaning, and what areas are probable to get bumped?



Then there may be the purposeful question: what else is already inside the unit. Some telephone caterers run a sizzling water setup, others have faith in a standalone equipment, and a stunning range at last add a boiler, even though it became not the customary plan. That is while Boiler Installation and Boiler Service choices start off influencing the gas cooker layout.

Even air adjustments depend. If you run Aircon or Air Conditioning devices contained in the van, the airflow development can affect how fumes disperse and the way burners perform. It shouldn't be that an air conditioning unit "breaks" gas protection, yet it changes the environment. If you've extraction on one aspect and cooling airflow on the opposite, the ventilation process wants to be coherent.

In train, making plans for gasoline cooker installing pretty much comprises three strands going on instantaneously:

- equipment specifications, clearances, and get right of entry to for trustworthy maintenance
- LPG pipe routing that avoids tension factors and protects the pipe from wreck
- an standard view of air flow, warm administration, and the way you will run the van on a daily basis

If anyone of these strands is weak, you can still suppose it later.

Pipework and appliance positioning: the details that forestall long run trouble

When buyers ask about "setting up," they most commonly photo the cooker connected to the fuel line. Connection is simplest one area. The pipework direction is what determines whether or not the formulation stays sturdy whilst the van is shifting and whilst package is cleaned.

I pay concentration to 3 non-negotiables:

First, pipe coverage. A van kitchen gets wet. It gets cleaned with hoses, brushes, and usually a splash that finds its method the place it needs to now not. Pipework could be included from have an impact on and from drips. That may perhaps imply exact runs alongside structured areas, protecting where mandatory, and making sure you are usually not exposing joints to fixed spray.

Second, separation and warmth leadership. Gas cookers throw out heat. If the pipework is too close, or if the route runs in which radiant warmth concentrates, materials can age turbo than expected. Regulators and valves aren't designed to be cooked themselves.

Third, isolation and access. You choose isolation valves that which you can reach effectively devoid of dismantling part the worktop. If you ever need Gas Safety Check paintings, a restoration, or a side swap, entry becomes the distinction between a short talk over with and an high priced shutdown.

If you also are strolling Plumbing into the unit for sinks and wash-up, the pipe routing can collide together with your gasoline pipe strategy. I repeatedly have faith in them as a unmarried map, although they're separate approaches. A neat plumbing format can depart you the gap you need for the gasoline traces, and it may well additionally discontinue you from chopping into gasoline routes later.

Ventilation and safety: the component you cannot “upload later”

Ventilation is one of those subjects folk be aware solely after whatever is going fallacious. A poorly ventilated cooking facet can end in problems you may not instant connect with airflow, like unreliable burner efficiency, nuisance burner shutdowns, and in the worst case, detrimental stipulations.

For LPG installations in phone catering instruments, air flow must be designed into the unit, not improvised. That incorporates guaranteeing any openings, flues, and air paths are amazing for the home equipment you might be driving and the means the unit is equipped.

If you've got ever had a Gas Fire Service or Gas Fire Installation accomplished in a estate, possible realize the underlying good judgment. Openings and flue paths should not non-compulsory. The same frame of mind applies the following, just with cooker-genuine considerations.

I actually have walked vans where the cooker turned into “first-class” during quiet hours, then grew to become temperamental when the kitchen got busy and other fanatics ran. That is why I like to test below useful conditions right through commissioning.

Pressure, regulation, and most suitable fittings for LPG

With LPG, an appropriate regulator and reliable deliver topic as a whole lot because the appliance itself. A cooker can also ignite safely on a recent setup, however if the deliver power is off or the regulator is mismatched, the flame development can turned into inconsistent as quite a bit trade.

During commissioning, we check that gasoline beginning is regular and that each one connections are seated adequately. That contains checking fittings, guaranteeing there are not any leaks, and guaranteeing the method is configured as meant.

This can be in which “an individual else geared up it” will become an concern. I actually have obvious installs where the correct regulator was once guessed, or wherein fittings were substituted since a facet “seemed similar.” LPG approaches should not the position for guesswork, in view that the behaviour can also be subtly improper.

If you might be constructing a unit or upgrading your setup, it is worthy budgeting good for Gas Cooker Installation with the aid of a ready engineer, as opposed to attempting to patch the provide line after the reality.

Commissioning: guaranteeing it's miles secure until now you plate food

Once the pipework is in position and the cooker is hooked up, commissioning is the place you earn peace of mind. That part usually carries practical tests, rigidity exams, ignition behaviour, flame look, and making sure shut-off controls perform correctly.

Leak checking out is also crucial. Even a small leak can grow to be a bigger one less than vibration and thermal cycling. Mobile instruments see steady action, so a "slightly important" difficulty continues to be an extreme aspect.

If your installation is completed with commissioning finished wisely, you could be in a position to run the cooker as estimated and understand the technique is stable.

Gas Safety Check and the paperwork you unquestionably need

If you run a catering company, forms is absolutely not simply admin. It is portion [Plumbing Essex](#) of reliable operation. A Gas Safety Check after deploy, and in step with required ongoing periods, is the way you be sure the components remains compliant.

For many operators, the big question is what they get hold of on the conclusion of the process and what they have to continue. In prepare, you need a Gas protection certificates where required and designated records of what was once checked, what handed, and what movements had been taken if some thing essential cognizance.

On busy websites, I actually have obvious certificate transform rough to hit upon when they are no longer saved as a part of a undemanding commercial habitual. Keep it somewhere predictable. If you hand it to an inspector or an journey organiser, you need to not be searching through folders when your staff is attempting to cook dinner.

A certificates is additionally really good for you internally. When a Gas cooker starts off appearing up, a latest Gas Safety Check listing allows you cut down no matter if a specific thing replaced after the final carrier.

When matters cross unsuitable: effortless cooker and fuel supply symptoms

Even with a sizeable install, package can wear out. Valves age, burners get contaminated, and regulators can turn out to be much less consistent. The distinction between a attainable restoration and a long downtime comes right down to diagnosis.

Here are signs and symptoms I oftentimes get calls about in cellular kitchens:

- the cooker flame is vulnerable or uneven
- ignition takes diverse tries, otherwise you get intermittent ignition
- burner minimize-outs in the course of heavy use
- smells of fuel or lingering odours after shutdown
- challenge getting regular temperature across sessions

The temptation is to "clear the burner and wish," yet you are not able to skip safe practices assessments. A smell or repeated minimize-outs can point to source concerns, blocked resources, or a ventilation worry, relying at the layout.

If you want Boiler Repair or Boiler Breakdown reinforce, the same diagnostic discipline applies. Boilers, cookers, and gas appliances can share concerns like gas grant caliber and air flow recognition, but each one equipment desires to be assessed on its own behaviour.

Linking to different products and services within the unit: boiler, hot water, and more

A lot of telephone caterers beginning small and increase. A van that begins with a unmarried cooker can later add a warm water system. Sometimes that will become a suited boiler. If you are planning forward, it truly is worth taking into consideration how Boiler Installation and future Boiler Service will fit together with your current pipe routing and fuel layout.

The boiler part of things can influence fuel cooker work in a number of techniques:

- shared isolation preparations and entry panels
- routing challenges when pipework receives expanded
- air flow demands relying on the boiler form and situation

If you emerge as needing Boiler Repair, you do now not want to notice that the gas pipe course to the cooker made it tough to provider the boiler effectively. I actually have viewed the other too, in which a cautious set up left sparkling get admission to for every thing, so a later fix was rapid.

Then there is Power Flush. You may not ponder capability flushing in a burger van, but it comes up whilst there may be a small heating loop or when a manner has been contaminated through the years. If you're operating a boiler for decent water or heating, exact protection and any required flushing should still be planned, not rushed. The similar approach you do now not prefer to "patch" a fuel deliver, you need to now not forget about heating procedure efficiency.

Gas hearth installs and carrier in mobile items: individual, yet relevant

Some mobilephone instruments contain greater heating, along with a gasoline hearth-genre function for relief. It is absolutely not the maximum long-established determination for kitchens, yet it does exist, specifically on seasonal setups or increased trailers.

If you will have a Gas Fire Installation, you prefer the venting and clearance method to be well matched with the relaxation of your kitchen airflow. Gas fire service can be a part of protecting combustion operating efficiently and thoroughly over time. Even in case you do now not at present have a gasoline fireplace, realizing how it truly is assessed facilitates you respect why ventilation and pipe integrity rely a lot across home equipment.

Integrating Air Conditioning with out compromising safety

Air Conditioning and Aircon devices are an increasing number of commonplace, exceptionally when operators prefer a cushty running area. The secret is to treat them as a part of the kitchen environment, now not a separate upload-on.

If you've gotten lovers, extraction, and aircon operating at the identical time, that you may exchange airflow. That can outcome how fumes disperse and may have an affect on the whole operating stipulations in which home equipment are working. It also transformations how undemanding that's to discover smells or leaks, given that airflow can masks odours briefly.

A risk-free install does not place confidence in luck. It relies on a coherent plan that considers how the whole lot runs for the time of provider. That is one reason why I want to inspect the total unit layout whilst people request Gas Cooker Installation, even if the job starts offevolved with "just connect the cooker."

A quickly genuine-global example: upgrading an older van

A few months ago, I supported an operator with an improve from a smaller cooker to a upper potential type. The van turned into strolling LPG, and the customary install were finished years in the past. Everything labored, but the operator used to be annoyed via temperature inconsistency at some stage in long carrier.

The first signal was now not dramatic. The flame was there, ignition become high quality, but the heat reaction did now not event expectancies. When we checked the setup, we stumbled on that the pipe routing to the cooker had been altered informally in some unspecified time in the future. It had been "made to match," however the direction created a susceptible vicinity in which small alterations in location and cleaning drive ought to rigidity connections.

We corrected the route, elevated maintenance, and completed authentic commissioning. After that, the cooker conducted continually, and the operator stopped having those traumatic moments where burgers had been ready but the warmth was once not.

The lesson was trouble-free: the cooker is in simple terms one portion. The set up high quality, pipe integrity, and risk-free routing figure out how strong the overall performance remains underneath proper use.

What to ask ahead of you book the job

If you might be hiring for Gas Cooker Installation, you may want to think pleased asking questions. Good engineers do no longer mind. You choose clarity about the scope, the assessments they can carry out, and what you could accept on finishing touch.

In my enjoy, the leading conversations manifest while you bring practical particulars, not vague requests. Tell them what percentage home equipment you have got now and what you could add later. Mention any deliberate air con or extraction adjustments. If you have a boiler or plan so as to add one, point out that too, seeing that the deploy plan will probably be staged to decrease destiny disruption.

Here is a quick set of questions that routinely brings the precise answers:

- what assessments and checks are integrated in commissioning and final signal-off
- in which you would place isolation valves so they're on hand at some point of original carrier
- how you can deal with LPG pipe routing, renovation, and get admission to for preservation
- even if you possibly can furnish the ideal Gas safeguard certificate documentation

If you do not get easy answers, it's miles value reconsidering. This is simply not the process for well mannered vagueness.

Keeping your setting up secure: carrier conduct that matter

Once your cooker is set up and the 1st assessments are carried out, reliability relies on how you operate and the way you protect the manner.

LPG home equipment want cleanliness in burner locations, yet cleaning should still not ever involve bypassing safety characteristics or altering connections. The similar is going for "immediate fixes" like tightening fittings devoid of leak trying out. If you tighten some thing after a suspected obstacle, you need to nevertheless determine safety afterwards.

If you could have a larger process that includes Boiler Service, Gas Fire Service, or Plumbing work, construct it into your recurring. A calendar frame of mind beats panic. Operators who avoid consistent servicing schedules are quite often calmer at the day of an event, given that they've got already dealt with small matters beforehand they become downtime.

I also counsel operators maintain facts. When one thing alterations, you desire to recognise if it changed into after a specific service, a change in appliance, or a direction amendment after cleansing.

Choosing the true installer: competence reveals within the small things

The distinction between a activity that "works" and a process that stays nontoxic and steady is recurrently visible within the conclude. You can see it in how neatly pipework is routed and guarded, how isolations are put, and how thoroughly get admission to panels are planned.

A capable engineer can even think in advance approximately upkeep. They will evade designs that capture you into eradicating gadget simply to do a normal look at various. They will keep in mind how your group uses the unit, what will get sprayed and what receives treated day to day.

And if anything seems to be marginal, an exceptional engineer will flag it. Mobile catering instruments movement, and structures settle. A dependable method anticipates that rather than assuming the van will stay in fantastic situation without end.

A simple step-by-step commissioning expectation

If you desire a believe for what an intensive Gas Cooker Installation commissioning job looks like, that you could assume a disciplined sequence. You do not desire to memorise it, yet you deserve to know that each one step supports safety and performance.

Typical commissioning assessments embrace:

- verifying appliance operation and ignition reliability less than anticipated situations
- checking out for gasoline leaks and checking connection integrity
- confirming right manipulate operation, including close-off behaviour
- ensuring the install meets imperative safeguard requirements for a Gas protection certificates

If you might be promised "it simply needs turning on," treat that as a red flag. Cooking is difficult paintings, fuel programs are unforgiving, and the assessments exist for a purpose.

Final thoughts for operators operating burger van gas

A cellphone kitchen is a workplace. Your staff demands to cook dinner, and your purchasers want confidence. Gas Cooker Installation sits accurate on the intersection of those two realities.

When the installing is deliberate correctly for LPG, air flow is taken care of as component to the layout, and commissioning incorporates correct assessments, you in the reduction of the percentages of Boiler Breakdown surprises, boiler warm water hiccups, and people aggravating moments whilst a burner does no longer behave inside the heart of a hurry.

If you also have Boiler Installation, Boiler Repair, Power Flush requisites, and even Gas Fire Service and Gas Fire Installation within the wider components, it supports to coordinate your paintings as opposed to treating

every process like a standalone. Plumbing, Aircon, and Air Conditioning transformations can affect the environment round combustion. Good installers deal with it as one hooked up procedure.

Book the appropriate consumer for the process, keep your documentation, and decide to protection assessments as portion of your usual operation. That is how a van stays reputable season after season, even if the pitch is busy and the climate does now not play pleasant.